

# Elster Perfection Gas Products

## PE100/Bimodal PE3408 and Permasert® Gas Fittings & Accessories

### Permasert® Mechanical Couplings

Part #	Size	SDR/Wall	Carton Qty	lbs./ea.	List (ea.)
G50100	1/2" CTS	.090"	50	0.20	\$14.07
G50701	1/2" IPS	SDR 9.3	25	0.47	\$30.42
G50030	3/4" IPS	SDR 11	25	0.46	\$27.63
G50103	1" CTS	.090/.099/.102"	25	0.49	\$25.47
G50601	1" IPS	SDR 11	25	0.80	\$45.75
G50031	1-1/4" IPS	SDR 11	20	2.00	\$77.70
G50361	1-1/2" IPS	SDR 11	10	3.00	\$82.39
G50314	2" IPS	SDR 11	10	4.00	\$111.79



### Permasert® Reducing Couplings

Part #	Size	SDR/Wall	Size	SDR/Wall	Carton Qty	lbs./ea.	List (ea.)
G50751	1/2" IPS	SDR 9.3	1/2" CTS	.090"	25	0.50	\$45.00
G50756	1/2" IPS	SDR 9.3	3/4" IPS	SDR 11	25	0.45	\$39.04
G50969	3/4" IPS	SDR 11	1/2" CTS	.090"	25	0.40	\$49.68
G50148	3/4" IPS	SDR 11	1" CTS	.090/.099/.102"	25	0.50	\$29.66
G51432	1" IPS	SDR 11	3/4" CTS	SDR 11	25	0.98	\$89.61
G50334100	2" IPS	SDR 11	1-1/4" IPS	SDR 11	5	3.60	\$191.39



### Permasert® 3-Way Tees

Part #	Size	SDR/Wall	Carton Qty	lbs./ea.	List (ea.)
G50199	1/2" CTS	.090"	25	0.50	\$47.78
G50730100	1/2" IPS	SDR 9.3	20	1.30	\$79.98
G50929	3/4" IPS	SDR 11	20	1.13	\$79.98
G50292	1" CTS	.090/.099/.102"	20	1.33	\$77.32
G50634	1" IPS	SDR 11	10	2.32	\$139.17
G50989	1-1/4" IPS	SDR 11	10	4.75	\$179.60
G50316	2" IPS	SDR 11	4	9.00	\$346.27



### Permasert® 3-Way Reducing Tees

Part #	Size	SDR/Wall	Size	SDR/Wall	Size	SDR/Wall	Carton Qty	lbs./ea.	List (ea.)
G50336100	1-1/4" IPS	SDR 11	1-1/4" IPS	SDR 11	1" CTS	.090/.099/.102"	10	4.00	\$166.42
G51283	2" IPS	SDR 11	2" IPS	SDR 11	1" IPS	SDR 11	10	7.00	\$305.97
G51285	2" IPS	SDR 11	2" IPS	SDR 11	1-1/4" IPS	SDR 11	4	7.00	\$308.63



### Permasert® Blind End Caps - both ends functional

Part #	Size	SDR/Wall	Carton Qty	lbs./ea.	List (ea.)
G50317	2" IPS	SDR 11	5	4.80	\$191.26



**Permasert® Ells**

Part #	Size	SDR/Wall	Carton Qty	lbs./ea.	List (ea.)
G50294	1/2" CTS	.090"	50	0.34	\$43.36
G51620	3/4" IPS	SDR 11	25	1.00	\$60.84
G51333	1" CTS	.090/.099/.102"	25	0.80	\$58.42
G50636	1" IPS	SDR 11	20	1.61	\$92.01
G50988	1-1/4" IPS	SDR 11	10	3.25	\$137.52
G50315	2" IPS	SDR 11	4	6.00	\$250.45



**The Elster Perfection Coppersert®**

Part #	Copper Size	PE Size	SDR/Wall	Carton Qty	lbs./ea.	List (ea.)
G41013	1/2" OD	1/2" CTS	.090"	10	0.32	\$33.97



**Permasert® XL Large Diameter Mechanical Couplings**

**Permasert® XLP PE-to-PE with two stiffeners**

Part #	Size	SDR/Wall	Carton Qty	lbs./ea.	List (ea.)
G55131	3" IPS	SDR 11/11.5	2	14.00	\$349.50
G55101	4" IPS	SDR 11/11.5	2	16.00	\$349.50



**Permasert® XLS PE-to-Steel with one stiffener**

Part #	Size	SDR/Wall	Carton Qty	lbs./ea.	List (ea.)
G55164	2" IPS	SDR 11	2	9.20	\$344.73
G55140	3" IPS	SDR 11/11.5	2	15.00	\$407.32

**PermaLock® Mechanical Tapping Tees (PMTT) with Permasert® Outlet**

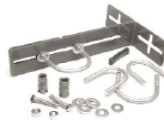
Part #	Main Size	Outlet Size	SDR/Wall	Carton Qty	lbs./ea.	List (ea.)
G54251	1-1/4" IPS	1" CTS	.090/.099/.102"	20	2.12	\$86.07
G55802	2" IPS	1" CTS	.090/.099/.102"	20	2.10	\$86.07
G55951	2" IPS	1" IPS	SDR 11	10	2.56	\$103.08
G55979	2" IPS	1-1/4" IPS	SDR 11	10	4.00	\$144.40
G55811	4" IPS	1" CTS	.090/.099/.102"	10	2.63	\$111.52
G55953	4" IPS	1" IPS	SDR 11	10	3.13	\$128.67



**PMTT Accessories**

Part #	Description	Carton Qty	lbs./ea.	List (ea.)
G55651	Test Cap Assembly (1-1/4" IPS through 8" IPS Mains)	1	1.00	\$53.54

**Elster Perfection Meter Supports, Brackets**



Part #	Description	Size	Nominal Building Offset	Carton Qty	lbs./ea.	List (ea.)
G74440	Universal Mount Riser Bracket Kit	3/4" through 2" IPS		1	3.73	\$29.84
G74506	Foundation Bracket	3/4" through 2" IPS	4"	1	2.96	\$20.21
G74500	Foundation Bracket	3/4" through 2" IPS	6"	1	2.96	\$23.00

**PSV™ Polyethylene Shut-Off Valves with Permasert® Mechanical Outlets (PSVP)**

Part #	Outlet Size	SDR/Wall	Port Size (in.)	Carton Qty	lbs./ea.	List (ea.)
G45161	1-1/4" IPS	SDR 11	0.89"	10	5.00	\$226.12
G46011	2" IPS	SDR 11	0.89"	5	8.50	\$477.60



**Elster Perfection Anodeless Risers**



Part #	Outlet	Inlet	Inlet Type	SDR/Wall	Vertical	Horizontal	Pallet Qty	lbs./ea.	List (ea.)
G77195	3/4" IPS	1/2" CTS	Cplg	.090"	18"	18"	200	5.00	\$32.19
G77181	3/4" IPS	1/2" CTS	Cplg	.090"	30"	24"	200	5.00	\$50.08
G79209	3/4" IPS	3/4" IPS	Cplg	SDR 11	30"	25"	100	7.00	\$76.80
G77120	3/4" IPS	1" CTS	Cplg	.090/.099/.102"	30"	25"	150	8.00	\$71.20
G79035	1" IPS	1" IPS	B/F	SDR 11	30"	24"	120	8.00	\$58.78
G79408	1" IPS	1" IPS	Cplg	SDR 11	30"	25"	120	8.00	\$120.09
G75903	1-1/4" IPS	1-1/4" IPS	B/F	SDR 11	30"	24"	100	15.00	\$99.11
G75904	1-1/4" IPS	1-1/4" IPS	Cplg	SDR 11	30"	25"	50	15.00	\$133.19
G79799	1-1/2" IPS	1-1/2" IPS	B/F	SDR 11	32"	29"	50	13.00	\$112.60
G79784	1-1/2" IPS	1-1/2" IPS	Cplg	SDR 11	32"	29"	50	17.00	\$199.40
G79811	2" IPS, Fusion Elbow	2" IPS	B/F	SDR 11	32"	29"	30	17.00	\$171.63
G75906	2" IPS, Fusion Elbow	2" IPS	Cplg	SDR 11	32"	12"	25	17.00	\$258.77
G78531	3" IPS, Thread End, Fusion Elbow	3" IPS	B/F	SDR 11.5	37"	13"	1	17.62	\$576.49

KEY:

DIMENSIONS: NPT X PE, Rise Leg x Base Leg x PE Material  
 MATERIAL: XMD - Performance Pipe DriscoPlex 6500 PE2406

Cplg - Permasert Coupling End  
 B/F - Butt Fusion End

**Elster Perfection Transition Fittings**



Part #	Outlet	Steel Size	PE Size	SDR/Wall	Carton Qty	lbs./ea.	List (ea.)
G700205	THD	3/4"	1/2" CTS	.090"	25	1.00	\$19.29
G700802	THD	3/4"	3/4" IPS	SDR 11	25	1.10	\$21.07
G701407	THD	1"	1" CTS	.099"	25	1.33	\$22.12
G701202	THD	1"	1" IPS	SDR 11	25	1.50	\$22.26
G702205	THD	1-1/4"	1-1/4" IPS	SDR 11	10	2.50	\$28.65
G702401	THD	1-1/2"	1-1/2" IPS	SDR 11	10		\$39.63
G702602	THD	2"	2" IPS	SDR 11	10	3.25	\$41.12

KEY:

DIMENSIONS: Steel x PE  
 MATERIAL: XMD - Performance Pipe DriscoPlex 6500 PE2406

THD - Threaded Outlet

**Chamfering Tools**

Part #	Size/Description	Carton Qty	lbs./ea.	List (ea.)
G51016	1/2" CTS X 3/4" IPS	10	0.50	\$42.59
G51004	1/2" CTS X 1" CTS	10	0.30	\$42.59
G51008	3/4" IPS X 1" IPS	10	0.50	\$42.59
G51011	3/4" IPS X 1-1/4" IPS KIT	10	0.50	\$43.98
G51041	1-1/2" IPS	1	0.70	\$46.90
G51040	2" IPS	1	0.70	\$70.98



Kit includes Grease Pencil

**Additional styles and configurations are available.  
 Please call us for details on other items offered by Elster Perfection.**

There is an LT Connections Office Near You.....

Pottsville, PA 17901  
 800-325-8999 Phone  
 866-922-0076 Fax

Syracuse, NY 13206  
 800-822-8999 Phone  
 315-437-6269 Fax

Sanford, NC 27330  
 800-547-9089 Phone  
 919-774-6173 Fax

Website: <http://www.LTConnections.com>

Email: [info@ltconnections.com](mailto:info@ltconnections.com)

Possession of this price list shall not be construed as an offer to sell the products listed.